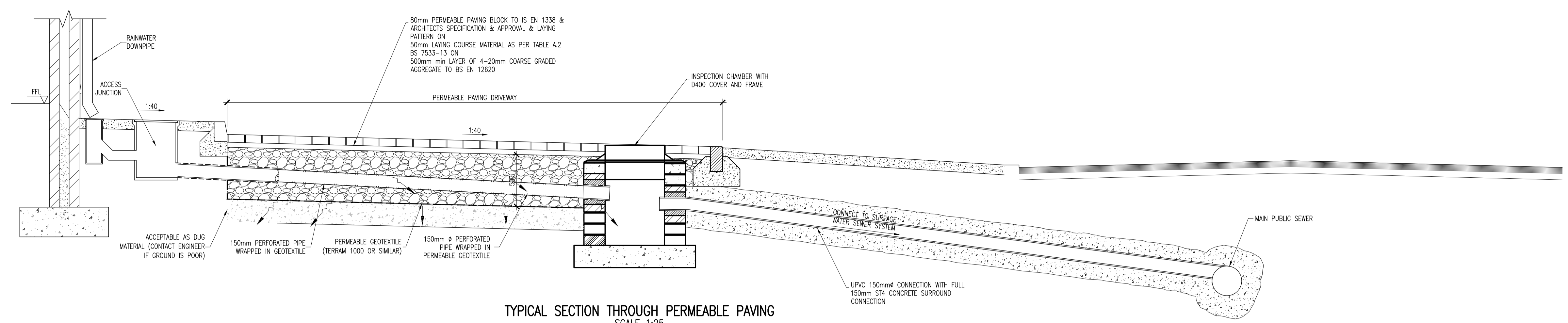
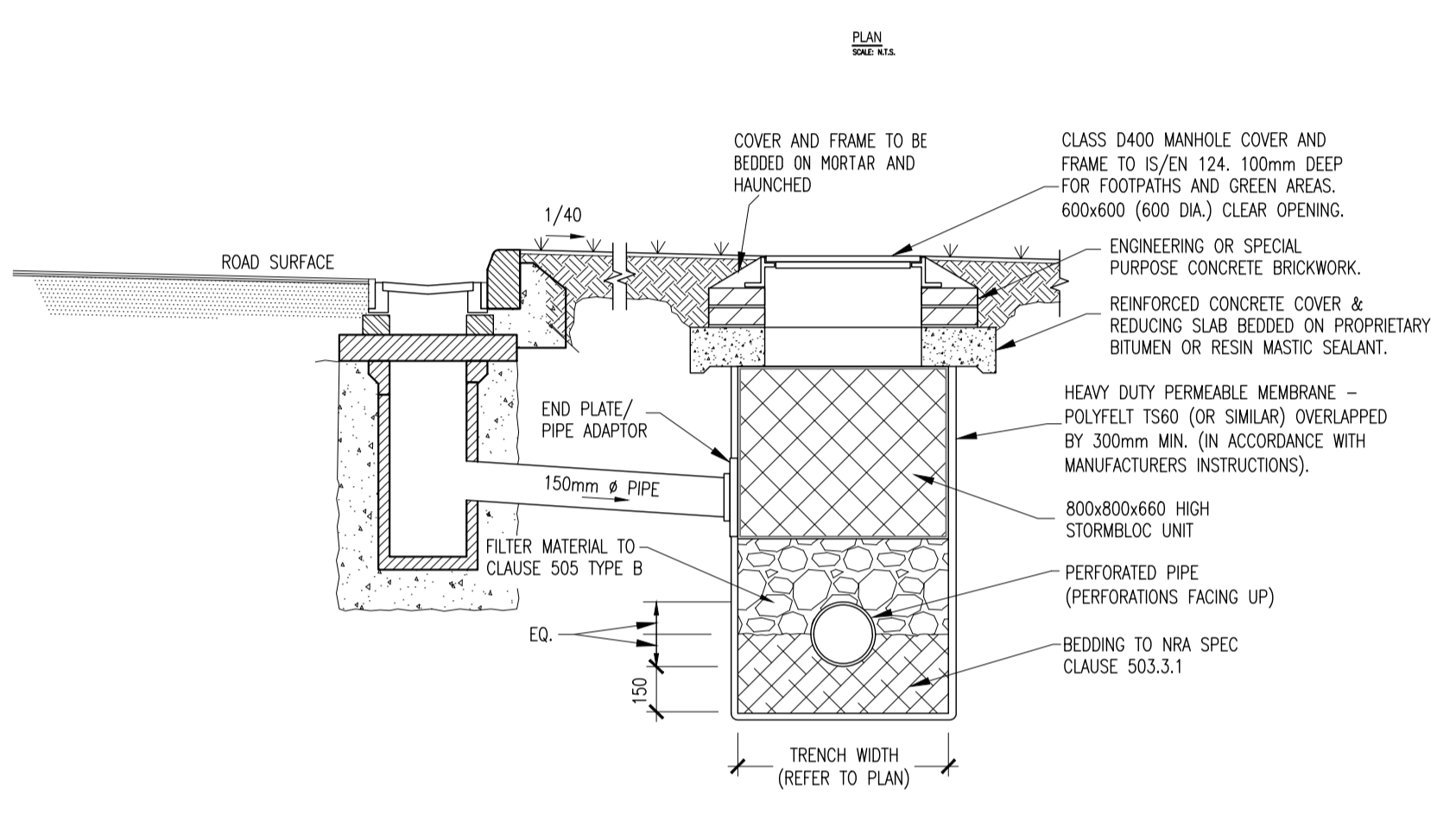


NOTES:

1. WATERMAIN TO BE 150/100mm DIA. PVC-A TO BS PAS27 (MIN. 10 BAR) EXCEPT UNDER ROADWAYS WHERE DUCTILE IRON IS TO BE USED.
2. AT 90 DEG. TURNS USE 2 No. 45 DEG. BENDS.
3. MINIMUM COVER TO WATERMAIN TO BE 900mm.
4. SPIGOT SOCKET CONNECTIONS TO BE USED AT PVC-A/DUCTILE IRON JUNCTIONS.
5. ANCHOR BLOCKS TO BE POSITIONED AT DEAD ENDS, TEES, BENDS AT EACH SIDE OF HYDRANTS AND VALVES.
6. HYDRANT OUTLET TO BE 200mm BELOW GROUND LEVEL UNLESS REQUESTED OTHERWISE.
7. HYDRANTS SHALL BE MANUFACTURED IN ACCORDANCE WITH BS 750: 2006 TYPE 2 AND SHALL INCORPORATE A SCREWDOWN VALVE UNDERGROUND "GUIDE IN LOAD" TYPE WITH BAYONET LEG OUTLETS AND FABE SPINDLE CAP OF CAST IRON AND IRON CHAIN. HYDRANT VALVE SHALL BE "ANTI CLOCKWISE OPENING".
8. SLUICE VALVES SHALL COMPLY WITH THE REQUIREMENT OF BS1563. THEY SHALL "CLOSE BY TURNING ANTI CLOCKWISE".
9. VALVES AND HYDRANTS WHEN INSTALLED SHALL BE COVERED WITH APPROVED HEAVY DUTY METAL SURFACE COVERS. THESE COVERS MUST CONFORM WITH THE LOCAL AUTHORITY SPECIFICATIONS. COVERS TO BE HEAVY DUTY METAL COVERS TO IS EN 124.
10. INDICATOR PLATES SHALL CLEARLY IDENTIFY HYDRANT, AIR VALVE AND SLUICE VALVE LOCATIONS AND BASE BOARD LOCATIONS SHALL BE APPROVED BY THE LOCAL AUTHORITY. FIXED LETTERINGS SHALL COMPLY WITH BS3251. BACKGROUND COLOUR YELLOW TEXT COLOUR BLACK.
11. DRAINAGE MUST BE PROVIDED TO ENSURE THAT THE CHAMBERS CANNOT BECOME FLOODED WITH SURFACE OR GROUND WATER.
12. ALL SERVICE PIPES, CONNECTIONS AND WATER CONTROL UNITS SHALL BE AS PER OVERSEEING LOCAL AUTHORITY REQUIREMENTS.
13. ALL WATERMANS SHALL BE TESTED IN ACCORDANCE WITH SPECIFICATION & LOCAL OVERSEEING AUTHORITIES GUIDELINES FOR DRINKING WATER SUPPLY.
14. CONNECTION TO EXISTING WATERMAIN TO BE CO-ORDINATED WITH LOCAL OVERSEEING AUTHORITY.
15. CONTRACTOR TO LIASE WITH LOCAL OVERSEEING AUTHORITY FOR TESTING CLEANSING AND STERILISATION OF NEW WATERMANS.
16. ALL WORKS TO BE CONSTRUCTED IN ACCORDANCE WITH THE NRA SPECIFICATION FOR ROAD WORKS UNLESS OVERRIDDEN BY LOCAL OVERSEEING AUTHORITY'S STANDARDS.
17. ALL ROAD MARKINGS & SIGNS SHALL COMPLY FULLY WITH THE TRAFFIC SIGNS MANUAL PUBLISHED BY THE DEPARTMENT OF TRANSPORT, JUNE 2010.
18. SIGNS & MARKINGS: CONTRACTOR TO CONFIRM PRECISE SETTING OUT WITH EMPLOYERS REPRESENTATIVE PRIOR TO COMPLETION.
19. ALL SIGNS TO BE MOUNTED ON 76.1MM GALVANISED STEEL POSTS WITH COLOURED SLEEVES U.N.O. TO SPECIFICATION AND IN ACCORDANCE WITH THE TRAFFIC SIGNS MANUAL: MOUNTING HEIGHT TO BOTTOM OF SIGN = 2.3M U.N.O.
20. ALL TRAFFIC MANAGEMENT TO COMPLY FULLY WITH THE PROVISIONS OF CHAPTER 8 OF THE TRAFFIC SIGNS MANUAL.
21. ALL CO-ORDINATES ARE TO ITM.
22. ALL LEVELS ARE TO ORDINANCE DATUM AND ARE IN METRES.
23. ALL EXISTING SIGNS (INCLUDING POLES) AND MARKINGS TO BE TAKEN UP OR COVERED AND TEMPORARY MEASURES APPLIED IN ACCORDANCE WITH CONTRACTORS TRAFFIC MANAGEMENT PLAN. THE CONTRACTOR MAY USE EXISTING SIGNAGE AS PART OF THEIR TRAFFIC MANAGEMENT PLAN.
24. ALL EXISTING CHAMBERS AND ACCESS POINTS TO REMAIN CLEAR OF OBSTRUCTION THROUGHOUT WORKS. CHAMBERS SHALL BE REBUILT/RETAINED IN POSITION IDENTIFIED ON SITE SERVICES LAYOUT DRAWING.
25. ALL PEDESTRIAN, CYCLE AND VEHICULAR ROUTES MUST BE RETAINED IN ACCORDANCE WITH APPROVED TRAFFIC MANAGEMENT PLAN.
26. ALL MATERIALS TO BE DISPOSED OFF SITE SHALL BE TAKEN TO A LICENSED FACILITY APPROVED BY THE LOCAL OVERSEEING AUTHORITY.



TYPICAL SECTION THROUGH PERMEABLE PAVING
SCALE 1:25



GULLY CONNECTION TO FILTER DRAIN
SCALE: NTS

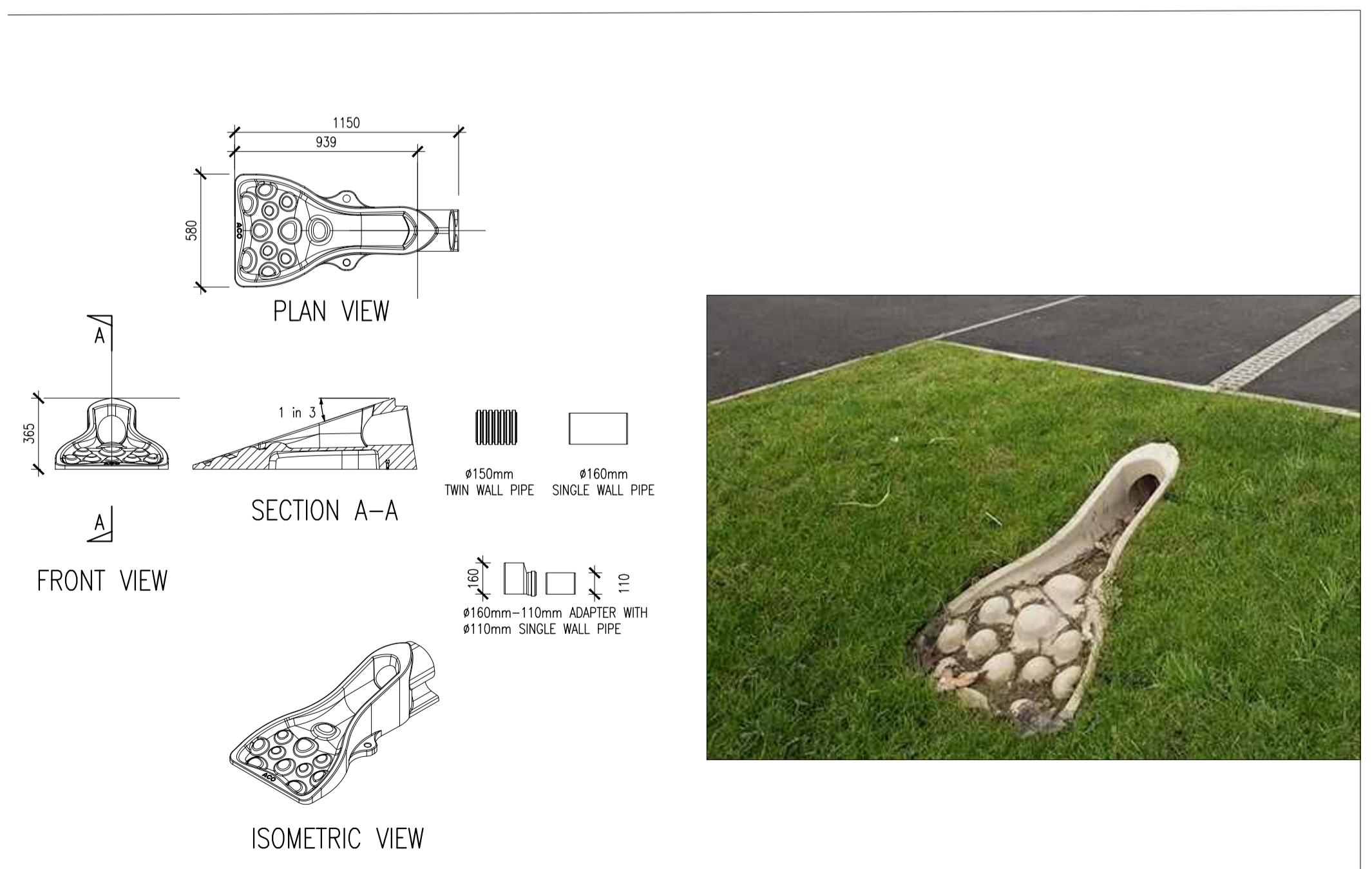
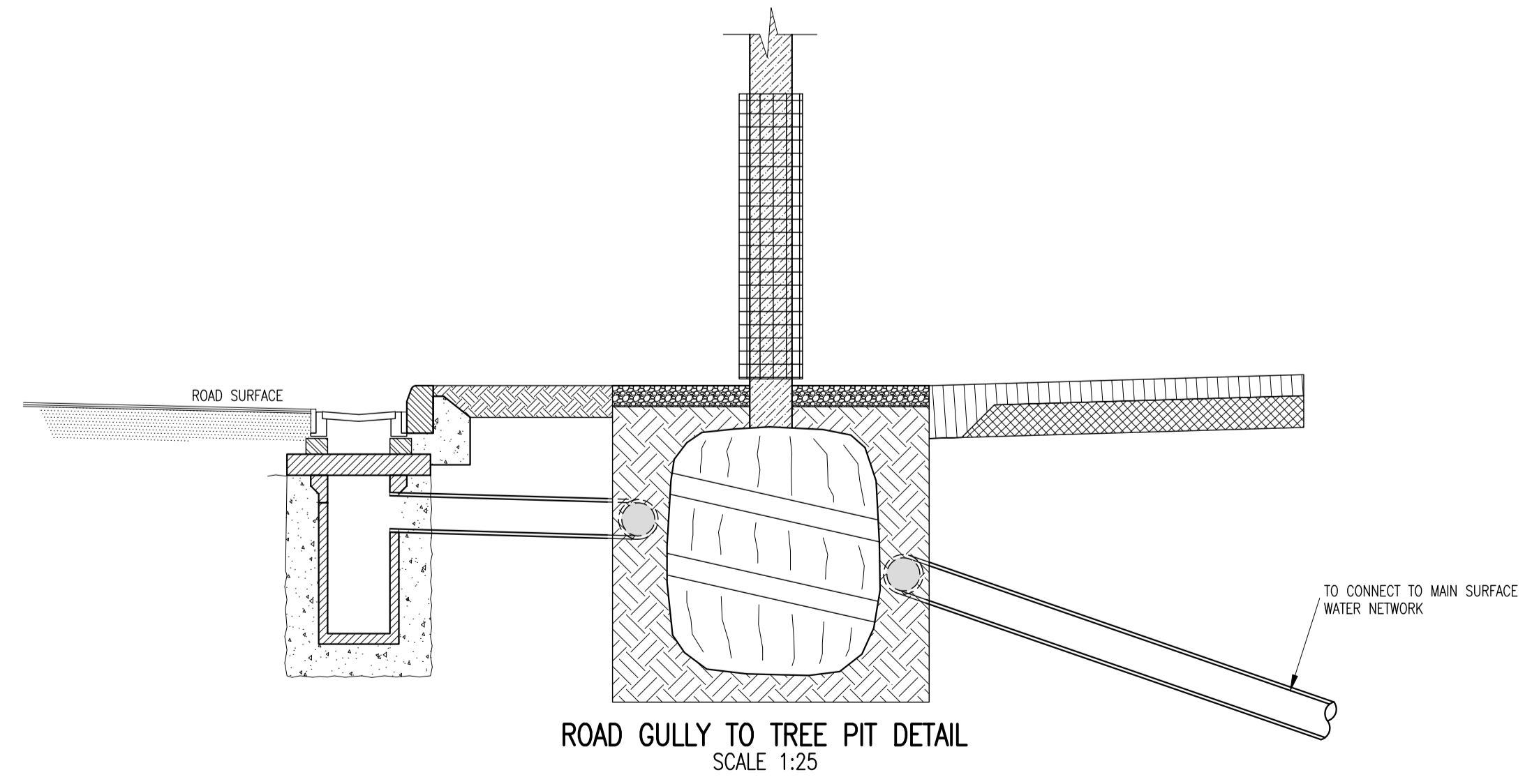


FIGURE 3C
PROPRIETARY INLET/OUTLET HEADWALL
SCALE 1:25



ROAD GULLY TO TREE PIT DETAIL
SCALE 1:25

P03	09-06-22	PLANNING SUBMISSION	ICJ	NOH
P02	23-02-22	Formal Submission	PLY	NOH
P01	21-01-22	FOR PLANNING	PLY	NOH
rev	date	description		by
		A - Approved		chkd.
		B - Approved with comments		
		C - Do not use		

client approval	submittal	issue purpose
	S4 - STAGE APPROVAL	PLANNING

DBFL Consulting Engineers
Civil, Structural & Transportation Engineering
www.dbfl.ie

DUBLIN OFFICE: Ormond House, Upper Ormond Quay, Dublin 7, D07 W704
PHONE: +353 1 406 4000

CORK OFFICE: Phoenix House, Monahan Road, Cork, T12 H1XV
PHONE: +353 (0) 21 2054538

WATERFORD OFFICE: Suite 10 The Arkun, Maritime Gate, Canada Street, Waterford, X91 W028
PHONE: +353 51 309 500

project ref. **BALLYOULSTER KDA SHD - PHASE 1 RESIDENTIAL DEVELOPMENT**

drawing title **SURFACE WATER TYPICAL CONSTRUCTION DETAILS SHEET 3**

client **KIERAN CURTIN, RECEIVER OVER CERTAIN ASSETS OF MAPLEWOOD DEVELOPMENTS UNLIMITED COMPANY**

designed by	author	scale	sheet size
GIS	RMC	AS SHOWN	A1
drawing no.			revision
180221-DBFL-SW-SP-DR-C-5002			P03